

South Hill Community Orchard

Planting notes



What we've planted so far...

As of Autumn 2023, we've planted 30 apple trees of Tamar Valley Heritage varieties.

The varieties have been chosen from trees established in the Tamar Valley area, so as to protect their genetic diversity and ensure that we have heritage varieties suited to the local conditions. Many of these trees are grafts from Cotehele and similar collections.

Each tree is in a protective cage to defend against deer and rabbit attack until they get robust enough to take care of themselves

The map shows the varieties, which are described on the following pages.



Apple Varieties (I)

Rough Pippin (I)

Dessert, Mid to late season. Greenish yellow with orangey-red flush, refreshingly sweet. Very healthy. Somerset



Cornish Mother (2, 6)

Dessert Midseason, sweet and aromatic. Origin: Wadebridge



Devon Crimson Queen (3)

Dessert "Queen". 2nd early, dark red, flat apple, with faint darker stripes. Sweet, aromatic and juicy. Origin: St. Dominic.



Apple Varieties (2)

Claygate Pearmain (4)

Fruits have firm, rather coarse textured juicy flesh with a rich aromatic flavour



Hocking's Green (5)

Firm sharp flesh. Origin Coads Green



Longkeeper (7, II)

Dessert. Mid to late season, sweet sub acid, firm, chewy. Found as a single tree in a hedge at Luckett.



Apple Varieties (3)

Cornish Pine (8)

Thought to be a seedling of the Cornish Gillyflower. Prominently ribbed medium to large yellow with brownish, orange flush. mid to late dessert, sweet slight acid developing a pineapple flavour.



Oaken Pin (9)

Dessert. Mid-late. Juicy, sweet and aromatic. Once common on Exmoor. Good bearer



Pig's Nose (10, 16)

Dessert 2nd early. Pretty apple, speckled orange with fine, dull red stripes. Honey sweet. Bitter skin.



Apple Varieties (4)

Cornish Pine (8)

Thought to be a seedling of the Cornish Gillyflower. Prominently ribbed medium to large yellow with brownish, orange flush. mid to late dessert, sweet slight acid developing a pineapple flavour.



Oaken Pin (9)

Dessert. Mid-late. Juicy, sweet and aromatic. Once common on Exmoor. Good bearer



Pig's Nose (10, 16)

Dessert 2nd early. Pretty apple, speckled orange with fine, dull red stripes. Honey sweet. Bitter skin.



Apple Varieties (5)

Plympton Pippin (12)

Cooker/Dessert Late season, green with a dull red flush, faint stripes. Dessert when kept.



Cornish Aromatic (13, 23)

Dessert Golden yellow fruit, red flush, flesh crisp. Aromatic, Good flavour and cropping.



Luscombe's Pine (14,15)

Dessert. Mid season to late. Fruit yellow, ideal for apple juice making. Healthy and moderate vigour



Apple Varieties (6)

Pitmaston Pineapple (17, 18)

The flesh is creamy yellow, tender, juicy and sweet with a nutty, honeyed/musky flavour and hints of pineapple tartness.



Tregonna King (19)

Dual purpose. Late season, Disease resistant.
Good for baking in October, eat in January



Lord Lambourne (20)

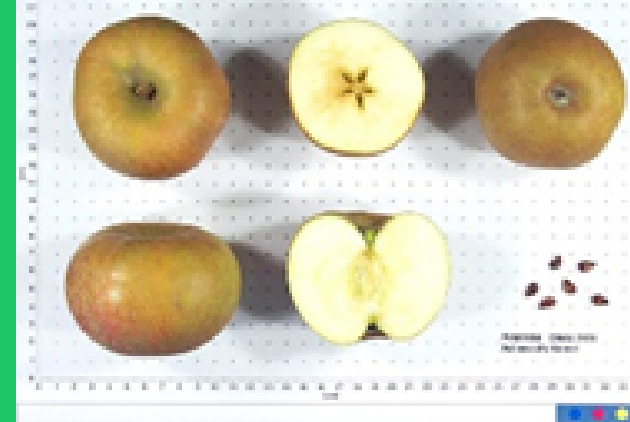
Bright striped red, moderately sweet, aromatic,
with a hint of strawberry.



Apple Varieties (7)

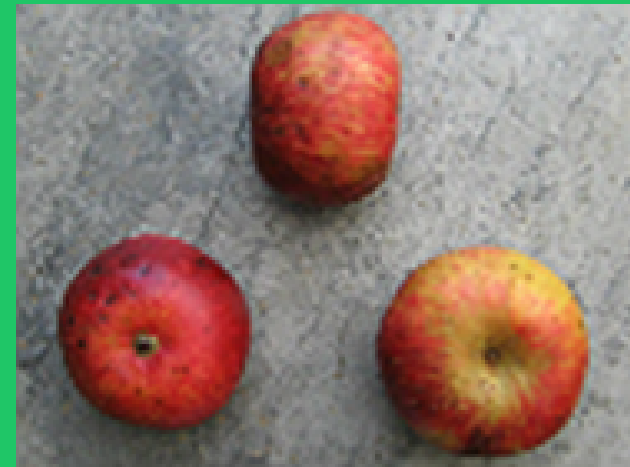
Ashmead's Kernel (21, 24)

Dessert apple which is a pale green aromatic fruit, with strong, sweet-sharp intense acid drop flavour.



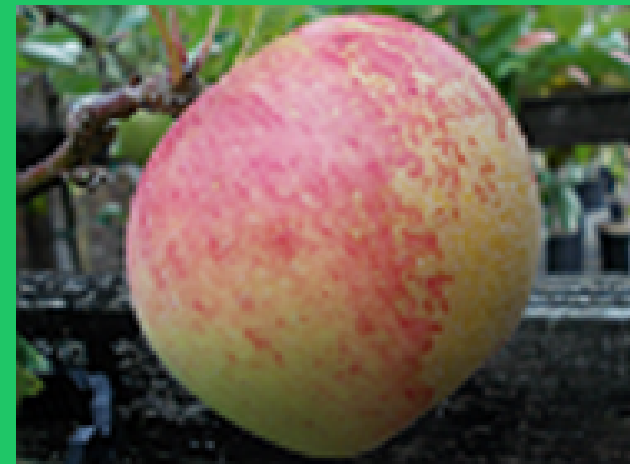
Ben's Red (22)

Dessert Flat fruit, flushed and striped red with russett dots. Sweet.



Newton Wonder (25)

Large, yellow and scarlet. Cooks to juicy mild puree. Fruity eater later in season.



Apple Varieties (8)

Worcester Pearmain (26)

Dessert. Orange-red, firm, juicy, and very sweet, with strawberry flavour. Ready Sept-Oct



Lord Derby (27, 28)

Excellent cooker, large firm green fruit, with distinctive angular ribbed shape, cook early for a good sharp taste



Miel D'Or (29)

Dessert, Small apple, yellow with a dull red flush and some russetting. Very sweet.



Apple Varieties (9)

Christmas Pippin (30)

A very "more-ish" apple, with a definite apple flavour, juicy melting flesh and a thin skin – very tasty and sweet.



