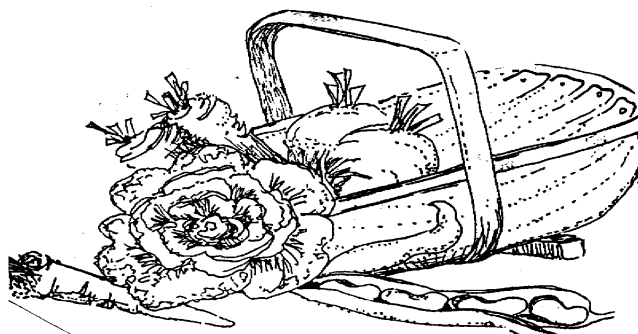


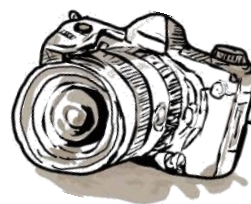
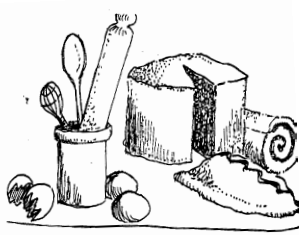
Parish Hall Golberdon South Hill

Horticultural Show 59th year



Saturday 18th August 2018

Cream Teas ~ Raffle ~ Stalls
Show to be opened at 2.00pm
Prizes presented at 4.00pm



OFFICERS

**PRESIDENT : Wendy Trewin, Higher Manaton Farm
Tel. 01579 370460**

**CHAIRMAN: Kim Howat, Newlandcombe, Trevigro
Tel. 01579 384054**

**VICE CHAIRMAN: Marina Herbert, Maders House, Maders
Tel. 01579 382419**

**JOINT SECRETARIES: Cat Sawford & Lucy Penney,
Meaders Farm, Maders
Tel. 01579 382182**

**TREASURER: Peggy Ede, Meaders Farm, Maders
Tel. 01579 382182**

**ASST TREASURER: Sue Palmer, Trefursdon, Maders
Tel. 01579 383006**

**REFRESHMENTS CONVENOR: Susan Hicks, Glebe Farm, South Hill
Tel. 01579 362223**

AUDITOR: Mr K Mortimore, Callington

COMMITTEE

Jill Reynolds, Myra Locock, Andrea Hill, Peter Tunnicliffe

***Helpers on Wednesday evening (15th) and on Show Day would be
much appreciated. Please let either Secretary know.***



RULES OF THE SHOW

1. Entry fees for **classes are 10p. Children's classes (94 – 113) 5p.**
2. Entry forms and fees should be sent to the Secretary together with all cups won in 2017, **no later than Monday 13th August 2018.**
3. Entries can be submitted at the Hall on **Monday 13th from 6.30 -7.30pm.**
4. Entries can be staged on the day of the Show **from 8 -10am** or the previous evening **from 7-8pm.**
5. All exhibits are left at the owners risk, and while every care is taken, the Show Committee will not be held responsible for any loss, damage or accident.
6. All entries (except in floral art classes) must be made or grown by the exhibitor. No joint entries.
7. Only one entry in any class will be accepted from any exhibitor. Exhibitors should supply their own containers.
- 8. Judging will commence at 10.15am sharp.**
9. The judges decision is final.
10. Prize money can be collected after 4pm, but no entries should be removed until after the prize giving.
11. All cups are perpetual and remain the property of the Show Committee. Recipients are responsible for their safety whilst in their possession.

JUDGES

VEGETABLES - Eric Ramage
FLORAL ART - Barbara Smetherham
CUT FLOWERS & POT PLANTS - Owen Hoskin
COOKERY & PRESERVES - Alison Gribble
HANDICRAFTS - Pat Mallett
CHILDREN'S CLASSES - Christine Walters
PHOTOGRAPHY - Richard Squires

FLORAL ART CLASSES

- 1. Gentleman's buttonhole**
- 2. Shoulder spray (not to exceed 9")**
- 3. An exhibit to depict a Book Title (18")**
- 4. An arrangement in a Teapot (18")**
- 5. An arrangement entitled "Riot of Colour" (18")**
- 6. An exhibit of floating flowers and foliage**

N.B The size of exhibits refers to the width & depth only.



CUT FLOWERS

- 7. 3 blooms**
- 8. 1 perfect bloom**
- 9. 1 perfect head**
- 10. 1 perfect spike**
- 11. 3 stems sweet peas**
- 12. 1 stem each of 3 different flowering shrubs**
- 13. 3 gladioli**
- 14. 3 cactus dahlias**
- 15. 3 Pom Pom dahlias**
- 16. 3 decorative dahlias**
- 17. 3 marigolds**
- 18. A single rose**



POT PLANTS

(Overall size MUST be stated on entry form)

- 19. Orchid
- 20. Fuchsia
- 21. 1 non-flowering plant
- 22. A planted container not to exceed 20"
(To be staged outside)
- 23. Any other flowering plant
- 24. 1 cactus or succulent



VEGETABLE CLASSES

N.B Vegetable classes will be judged according to RHS rules

25. 5 pods peas
26. 5 sugar snap peas
27. 5 pods broad beans
28. 5 French beans
29. 5 runner beans
30. 3 beetroot
31. 3 long carrots (4" tops)
32. 3 stump rooted carrots (4" tops)
33. 3 parsnips (4" tops)
34. 2 turnips
35. 1 cabbage
36. 1 cucumber
37. 2 lettuce (roots in tact)
38. 6 shallots (any variety)
39. 3 onions grown from sets
40. 3 blanch leeks
41. Any vegetable not mentioned



VEGETABLE CLASSES (continued)

- 42. 5 white potatoes**
- 43. 5 coloured potatoes**
- 44. A collection of potatoes (4 varieties 3 of each)**
- 45. 3 courgettes (flower in tact)**
- 46. 1 vegetable marrow (maximum 15")**
- 47. 3 sweet peppers any single colour**
- 48. 3 chilli peppers**
- 49. A collection of vegetables
(4 kinds - 2 of each displayed within 2 feet square)**
- 50. An unusual shaped vegetable**
- 51. Largest marrow**
- 52. Heaviest potato**
- 53. Longest edible runner bean**
- 54. 1 bulb of garlic**
- 55. 5 stems of parsley**
- 56. 5 mixed herbs - 2 stems of each**

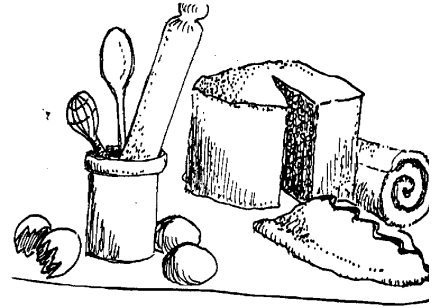
FRUIT

- 57. 5 cooking apples (stalks intact)**
- 58. 5 eating apples (stalks intact)**
- 59. 5 tomatoes (calyx intact)**
- 60. 10 Cherry Tomatoes (calyx intact)**
- 61. Plate of soft fruit - 9 fruits, single variety or mixed)**



COOKERY CLASSES

- 62. Victoria sandwich (jam filling)
- 63. Savoury quiche
- 64. Individual sweet
- 65. 3 plain scones
- 66. 3 slices tray bake
- 67. Loaf of bread
- 68. A traditional pasty
- 69. Sponge fruit flan
- 70. 3 Cornish Fairings
- 71. Boiled fruit cake



Recipe & Method

1. Into a large saucepan add 4oz margarine or butter, 6oz caster sugar, 6oz currants, 6oz sultanas, 2oz mixed peel, 8 fl oz water, 1 level teaspoon bicarbonate of soda, 1 heaped teaspoon mixed spice; bring to a rolling boil and cook for 1 minute.
2. Cool the mixture for 15 minutes, stirring often, before gradually adding 2 large beaten eggs followed by 4oz plain flour, 4oz self-raising flour & a pinch of salt.
3. Stir well then turn into a greased & lined 2lb loaf-tin.
4. Bake in the oven for 1 hr 15 minutes at 140°C.

PRESERVES

- 72. 1 jar marmalade
- 73. 1 jar jam (any variety)
- 74. 1 jar jelly (any variety)
- 75. 1 jar lemon curd
- 76. 1 jar chutney
- 77. 3 eggs on a saucer
- 78. Bottle of home-made drink



HANDICRAFT CLASSES

(Overall size **MUST** be stated on entry form)

- 79. A greetings card (any medium)
- 80. Any item of woodwork
- 81. Song title on a plate
- 82. A handmade item of jewellery
- 83. Any metal work
- 84. An item of crochet
- 85. An embroidered picture
- 86. A machine made article (hand finishes allowed)
- 87. A bag (any medium)
- 88. A painting in any medium (to be hung)
- 89. A limerick
- 90. A recycled item
- 91. Any handicraft not done with a needle (not stated)
- 92. A patchwork item
- 93. A hand knitted article any ply



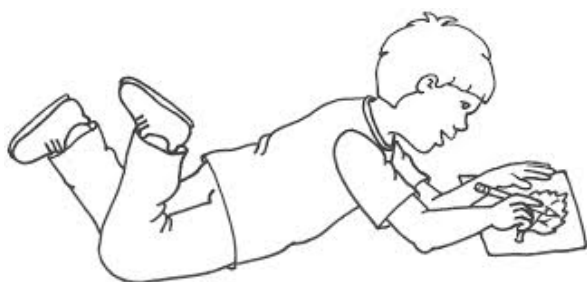
CHILDREN'S CLASSES

15 years and under

**Classes to be judged in age categories
5 yrs & under, 6 –10yrs and 11-15yrs**

(Age to be stated on entry form & must be the child's own work)

- 94. An animal made from fruit & vegetables**
- 95. Garden in a seed tray**
- 96. Wind chime (to be hung)**
- 97. A handwritten poem**
- 98. A TV programme on a plate**
- 99. A drawing entitled "My Family"**
- 100. A collection of grasses in a bottle**
- 101. 3 Rice Krispie Cakes**
- 102. A giant cookie**
- 103. A model I have made**
- 104. A computer generated poster for the 60th South Hill Show**
- 105. Fruit or vegetables you have grown yourself (max 4 items)**
- 106. Decorated boiled egg**
- 107. Collage made from pasta**



PHOTOGRAPHY CLASSES

CHILDREN'S PHOTOGRAPHY (Ages to 15)

- 108. A Selfie
- 109. My home
- 110. Own choice

OPEN PHOTOGRAPHY

- 111. Wildlife
- 112. Life in Our Parish
- 113. Animals at rest
- 114. It wasn't me!
- 115. Highways
- 116. Mist in the valley

Photos should not have been exhibited at this show before and only have been taken within the past 2 years.

They should not exceed 9x6"

They should be mounted on card.



TROPHIES



- *Committee Cup for most points in the Show
- *KJ Uglow Cup for the Runner-up
- *Cup for the next Runner-up
- *Barbara Ede Cup for the New Entrant with most points
- *EC Pomroy Trophy for the most points in the Floral Art classes
- *Maureen Hindle Trophy for the best exhibit in Floral Art
- *Jenny Jane Memorial Trophy for the best Rose in the Show
- *Cup for the best cut flowers in the show
- *Eggins Cup for most points in Cut Flower classes
- * Cup for best exhibit in Pot Plants
- *G Rickard Memorial Trophy for most points in vegetable classes
- *H Trewartha Cup for the best exhibit in vegetables classes
- *Cup for the best collection of vegetables
- *Buckingham Trophy for most points in Handicrafts
- *Cup for the best Handicraft exhibit
- *Mrs S Rickard Cup for most points in Cookery classes
- *Cup for the best exhibit in Cookery classes
- *Sheila Cup for most points in Photography
- *Cup for the best entry in Open Photography classes
- *Parish Council Miss Alvery Cup for the Local child with most points in the Show + a £15 gift voucher
- *Cup for the child with most points Age 5 & under + £5 gift voucher
- *Cup for the child with most points Age 6-10 + £5 gift voucher
 - *Cup for the child with most points Age 11—15 + £5 gift voucher
- *RHG Gimblett Cup for the best photo taken by a child

*All cups are perpetual and remain the property of the Show Committee
The recipients are responsible for their safety whilst in their possession*

PRIZES: 1st - 40p 2nd - 30p 3rd - 20p



Helluva

Pasties

Delicious homemade Pasties, Pies & sausage rolls, made lovingly by hand using the finest local ingredients

Stop in at one of our roadside outlets - St Ives Church End layby or Hatt Ellbridge layby, both open 10-2 Monday-Saturday

Or visit our Bakery at Cadson Manor Farm Callington for frozen produce 8am-2.30pm Mon-Sat

Get in touch...

01579 208 088 • enquiries@helluvapasties.co.uk

www.helluvapasties.co.uk • find us online  



HEAVY & LIGHT RECOVERY

Bases available at Callington PL17 8EG & Lee Mill PL21 9GB



Accredited to:



ISO 9001: 2008, PAS 43: 2012, NHSSD17B

Workshop facilities available to include:

Diagnostic Equipment, Air Conditioning,
Class IV MOT Testing Station, Welding and Bodyshop

0844 335 0566
www.keltekmotors.co.uk



Uniformed, DBS Checked, ADR Trained Staff
24hr 365 Days A Year Recovery Service
Any Heavy Or Light Vehicle
Liveried Vehicles
CCTV Monitored Storage facilities
Fully Insured With Unlimited Vehicle Value
To Include Goods In Transit Cover
24hr Control Centre
Live Job Updates
Off Road Recovery/winning Service Available
National O Licence

MEADERS CABINET WORKS

Kitchen Manufacturers Est 1960

Bespoke Made To Measures
Kitchen Units & Tailored Sliding
Wardrobe Doors & Interiors.
Replacement Doors &
Worktops Also Available.

MADERS, CALLINGTON
PL17 7LL

Tele: 01579 383160/384114

Mobile: 07929842819



BURBIDGE TKC FRANKE CAPLE OMEGA DUROPAL



Polhilsa Farm

Callington, Cornwall PL17 8PP

Bed and Breakfast

Self Catering Accommodation

Conference and Meetings Venue

Weddings and Functions

Tel: 01579 370784

ALTERATIONS



JANET HARDING
HAND-MADE
WITH LOVE
HANDBAGS - GIFTS
ALTERATIONS

01579 384014
0782 636 6487



Visit my shop in Pilgrims Arcade, Callington



**Profits raised to be split between St Luke's Hospice,
Show funds and Callington Young Farmers**

£2 per duck

**To be raced at 5pm from Lyner Bridge after prize giving
Cash prizes £50, £25 & £10 for first three ducks to
cross the line.**

**To buy ducks call Cat on 07900381890 or 01579 382182
or Lyn on 07866595835 or buy on show day.**

Fun Family Dog Show

- Best Puppy
- Best Pedigree
- Best Sporting
- Best Non Sporting
- Best Terrier
- Prettiest Girl
- Handsome Boy
- Waggiest Tail
- Most Appealing Eyes
- Best Resucue/Rehomed
- Child Handler under 10yrs
- Dog the judge would most like to take home
- Followed by Best in show & Reserve in Show

*Callington Young Farmers Raising money
for St Luke's Hospice and club funds.*

*£1 per class entry
Entries from 1pm,
Judging starts at 1.30pm
Golberdon Playing Field*



Entry Form

NAME

AGE IF CHILD

ADDRESS

CLASS	DESCRIPTION	SIZE	ENTRY FEE
TOTAL			£

